



WRAC FEATURED ORGANIZATION

Pinawa Art Gallery

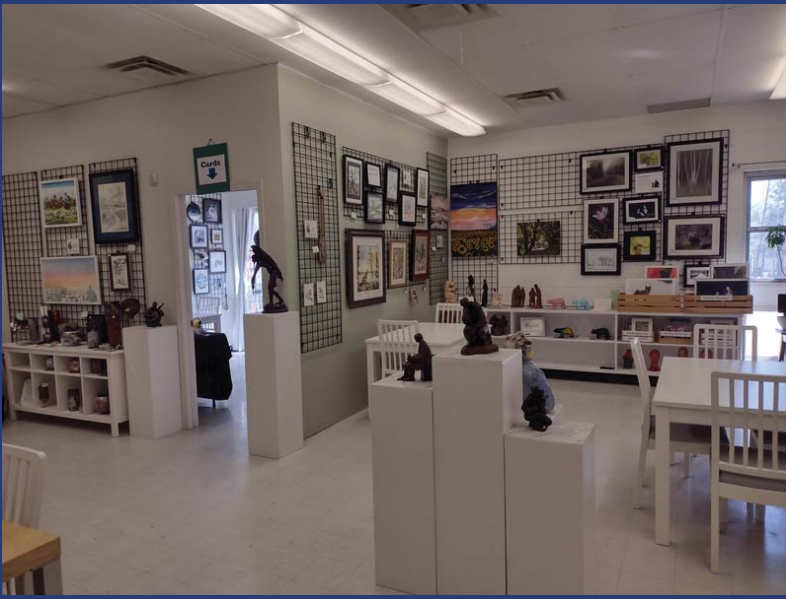


For this month, Winnipeg River Arts Council features Pinawa Art Gallery, a prominent arts organization in the region, with members from Bird River, Lac du Bonnet, and other surrounding areas.

Starting on July 14, Pinawa will begin celebrating its 60th anniversary and, in honour of the event, the gallery will be opening a new exhibit. To mark this occasion, WRAC would like to give readers a brief background of the gallery. It is a non-profit organization run by artist volunteers, and has a volunteer board of directors, including the gallery manager.

In the late 1970's, Pinawa Art 211 began as an ad hoc group of artists with Vivian Thomson, teacher and art specialist from Whiteshell School District, initiating the project. Over four decades, the organization has grown to include Pinawa Art Gallery and the Art Educational Centre for artists in the Eastman area.

In 2013, the gallery moved into the W.B. Lewis Centre, and relocated to a larger room in 2015 as the number of artists increased. The space was subdivided into two display areas, and the Art Education Centre serves as a separate area for classes, mentoring, and the pottery group. These days, the facility is open four days a week every month, except January.



Within the Lewis Business Centre, some artists have set up their own private studios. This building has hosted several exhibitions by PAG members, fulfilling a requirement for a designation as a “professional artist,” to be recognized by Manitoba Arts Network.

Every year, the Pinawa Art Gallery holds its Christmas “Artisans’ Sale.” In the summer, it supports the town’s

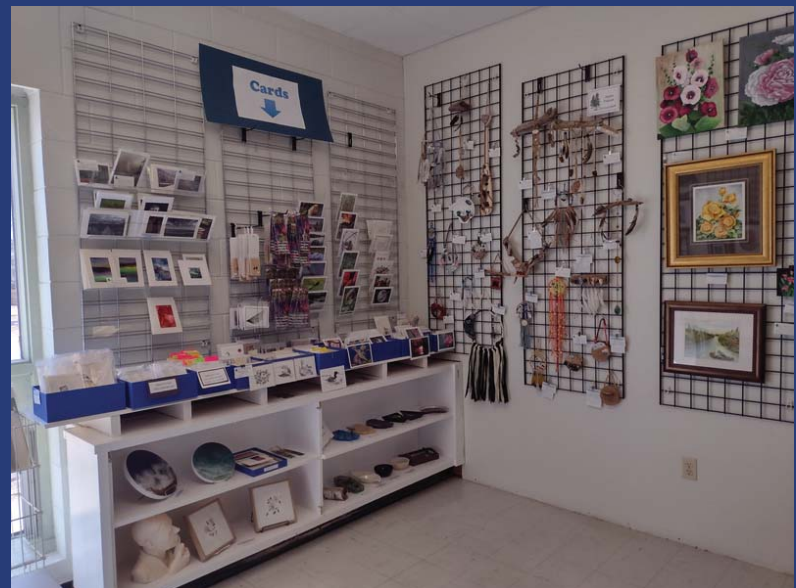
birthday celebrations with some artists taking part in the Indoor Market, while other artists greet visitors at the gallery. In August, PAG provides one of the many locations on the Boreal Shores Art Tour. Also, Pinawa’s Solo Store supports PAG with a mini-display of members’ work near their office area.

The space is open to the public, free of charge. Artists interested in membership must apply to the gallery, work as volunteer one day each month by rotation, and pay an inclusive annual fee to belong to both Art 211 and Pinawa Art Gallery.

It has an area where visitors can enjoy a cup of coffee, with snacks for sale, including treats from Morden’s Chocolates. Tables and chairs are available for a game of bridge, knitting instruction, or just a quiet contemplation of the incredible art found in this beautiful facility.

Brenda McKenzie, a longtime PAG member and frequent volunteer, said, “I read the gallery’s comments book and found two words used often: ‘Lovely’ and ‘Amazing.’ Former Pinawa residents return or Winnipeggers use it as a day trip destination. It has become a ‘must see’ when in town, with visitors from Lac du Bonnet to New Zealand. The Gallery is a great success!”

For more information visit:
pinawaartgallery.com



Lac du Bonnet District Museum presents

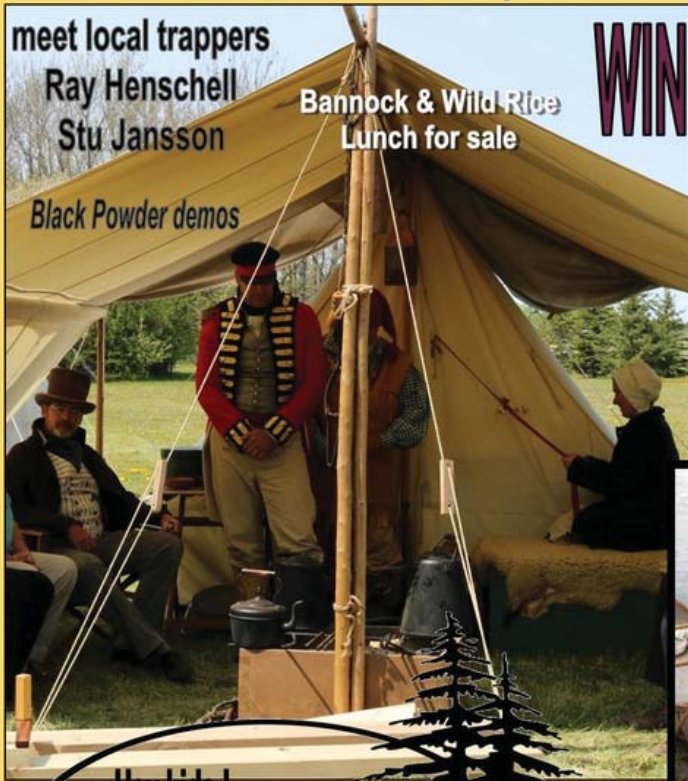
Red River Collective

meet local trappers

Ray Henschell
Stu Jansson

Bannock & Wild Rice
Lunch for sale

Black Powder demos



WINNIPEG RIVER RENDEZVOUS

JULY 1 & JULY 2

experience life during the FUR TRADE

HISTORY comes alive

LIVING HISTORICAL CAMPS



VOYAGEUR CHALLENGE

- . canoe packing
- . log throwing
- . Critter tracking

****PRIZES***

**Claim the
VOYAGEUR 2023 TITLE**

10:00 am - 4:00 pm

in Halliday Park
Hwys 502 & 313

Hey kids!
let's play the
Fur Trade Game



ldbhistorical.ca
ldbhistorical@gmail.ca

EASTMAN
JUDGED
ART
EXHIBITION

Coming in 2024!

Watch for more info!



Summer is nearly here, and it's time for the return of WFG's Summer Teen Filmmaking Camp! This is the place to be for the young aspiring filmmakers of the future! No experience is required!

Ages: 13-17

*Note: This in-person workshop is limited to 12 participants. While masks are no longer required to be worn in indoor public spaces in Manitoba, individuals are recommended to wear a mask in our Production Centre.

This camp provides teenagers with an opportunity to learn how the film industry really works and challenge themselves to create their own films. The program consists of thematic days, master classes and practical lessons with real equipment. Students will be able to try their best as directors, DOPs, screenwriters, editors, and so much more. In two weeks, students will develop their short films from the beginning to the final cut. Those who succeed will be able to watch their films on a big screen and get reviews from industry professionals.

This camp will take place at Winnipeg Film Group, on the 3rd floor at 100 Arthur Street. Monday – Friday, 12 pm – 6 pm starting July 17th & ending July 28th.

[https://www.winnipegfilmgroup.com/event/summer-teen-filmmaking-camp-2023/bit of body text](https://www.winnipegfilmgroup.com/event/summer-teen-filmmaking-camp-2023/bit%20of%20body%20text)



What a great way to celebrate Pinawa's 60th birthday with the Lions Club and EMCA's 50th Season of great concerts!

THE BROMANTICS will be "Twistin the Night Away" with us on FRIDAY, JULY 14 Under the Tent by the Pinawa Sundial Doors open: 7 pm Concert/Dance: 8 pm - 12 am

Tickets \$20

Online on the EMCA website, At the Pinawa Solo Market, Via phone at 204-753-8397

This is a licensed event. Attendees must be 18+.

Please note: This is not part of EMCA's subscription series.

Watch for more special events in celebration of EMCA's 50th Season.

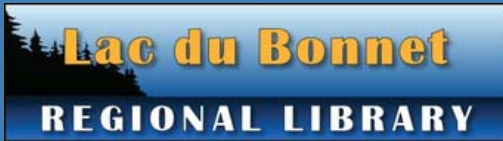


The excitement is irresistible! This year we have a stop further east than ever before. Stop # 4 in the south is a group site at Falcon Trails Resort - a 10 or 15 minute drive along the south shore of Falcon Lake. The tour route gives visitors a good view of the forests and lakes of the Whiteshell before entering the central region. Here they will join the Winnipeg River and can glimpse four major Hydro Dams (Seven Sisters Generating Station at Seven Sisters Falls, MacArthur Falls Generating Station, Great Falls Generating Station, and Pine Falls Generating Station at Powerview) on the way to Pine Falls. From Pine Falls, visitors head west to the east beaches. They can start at the north in Sandy Bay (150 km as the crow flies NW of Falcon Lake) and work their way south along Highway #59 through Victoria Beach, Hillside Beach, Belair, Lester Beach, Lakeshore Heights to Balsam Harbour. Or, visitors can begin in the north and work their way south. Either way, tour enthusiasts will see three distinct regions of SE Manitoba, each beautiful in its own way. Visitors will encounter the varied work of 33 artists and receive a warm welcome at each and every different stop.

borealshoresarttour.ca



Registration for summer programming is open! Please visit our website www.lacdubonnetlibrary.ca or come into the library to register. There is no cost for these programs but space is limited.



ALLARD LIBRARY
Bibliothèque Allard Regional Library
Discover the Possibilities!

Laura Reeves from Prairie Shore Botanicals is offering two mushroom workshops on Saturday, June 24 at our library in St. Georges. Follow the link below to register for one or both!



[Prairie Shores Botanical Registration](#)

BIBLIOTHÈQUE ALLARD
REGIONAL LIBRARY'S

VICTORIA BEACH BRANCH

SUMMER HOURS

Wednesdays 10:00am - 2:00pm

Fridays 10:00am - 2:00pm

Saturdays 10:00am - 4:00pm



PINAWA LIBRARY